

VILLAGE CENTRAL

Bulkington Village Centre
Community Newsletter

OCTOBER 2010

ISSUE No. 47

Inside this issue:

Entertainment	1
Dog Training	2
Jewellery Making	2
Gospel Choir	2
Walking for Health	2
BVC NEWS	3
Activity List	4

Services at the Centre:

Size	B/W	Colour
A4	12p per copy	75p per copy
A3	24p per copy	£1.50 per copy

A5	£0.55 per sheet
A4	£0.85 per sheet
A3	£1.25 per sheet



ENTERTAINMENT ON YOUR DOOR STEP!

At the centre we aim to put on various entertainment evenings to appeal to all audiences. This way you can come and enjoy an affordable local night out whilst supporting your local community centre. We do need your support to enable us to continue...

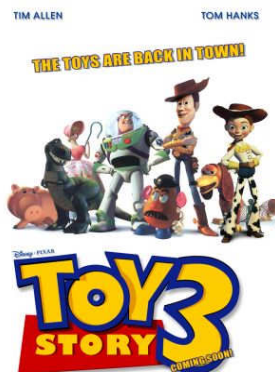


SATURDAY 23rd OCTOBER, 7.30pm

Do you like funny theatre or stand up comedy? Have you got an off beat sense of humour and enjoy a good night out—then we have the show for you! A very funny evening where the audience get to join in without being embarrassed. The performers ask for suggestions of people, places job etc & then the performers launch into a comedy sketch related to the ideas. Every single performance is different & really keeps the actors on their toes & the audience rolling with laughter. 3 versatile performers, 1 musician, no script, no safety nets this is a performance only the bravest actors would take on! This will be a very funny night of "off the cuff" comedy...

FILM NIGHTS

Now we are lucky enough to have integral multi media equipment at the centre we want to take full advantage of this and offer great value FILM NIGHTS. We really need local support to make it a success so we can continue to offer a variety of films for all ages & tastes. With cinema prices as they are what more could you ask for than an affordable night out on your doorstep at a fraction of the cost! The first film showing will be



TOY STORY 3

**SAT 20th NOVEMBER
6.00PM**

**Adults - £3.00
Children - £1.50**

Tuck Shop Available!!

BOOK NOW....

Showing on **SATURDAY 4TH DECEMBER,**
7.30pm **THE OLD DANCE SCHOOL**



The Old Dance School began in 2006 as a gathering of friends in the garden of the old Betty Fox school of ballet in Birmingham, from where they take their name. Among the nettles, each would bring along a tune or a song for the group to experiment with. Three years, 30,000 miles, nearly forty festivals, and several trips to A & E later, the young seven piece ensemble's second album *Forecast* delivers

a startling take on contemporary folk that is both firmly-rooted and unashamedly forward-thinking, though right at the heart of the music, a close group of friends with a vivid collective ear for a good tune. Harnessing energy from the elements, and inspiration from their adventures across wild British Landscape, the much anticipated colourful new release from The Old Dance School offers evocative images, blistering tunes and vivid songs with a virtuosity and vitality which draws from their classical and jazz informed backgrounds. Their debut album *Based on a True Story*, in 2008 was met with terrific reviews in the national press, championed by BBC Radio 2's Bob Harris, and has secured The Old Dance School as one of the most exciting young bands to have emerged recently. Having all studied formally at Birmingham Conservatoire, and met amongst the vibrant young music scene that surrounds it, the seven members of The Old Dance School may seem fresh faced, but don't let them fool you – the diversity and scale of each one's musical journey is quite remarkable. From international jazz festivals to European opera tours, film score commissions to classical recitals, green festivals to tattoo conventions, members of The Old Dance School have performed, recorded and toured with artists such as Martha Wainwright, Graham Coxon, Zoe Rahman, Neil Yates, Jim Perrin, The Destroyers, Martha Tilston, Kevin Dempsey, Joe Broughton and Chris While.

SATURDAY 5th FEBRUARY 2011

Tickets - £8.50 - Book Now!!

TEN DAYS... That shook the kitchen!

Ten Days .. that shook the kitchen! charts ten days in the life of Ruth Rich, a middle-aged, misfit, modern mum. With an embarrassing husband and three whingeing kids, Ruth's days are filled with the activities that are immediately familiar to mothers everywhere: children's swimming lessons, run-ins with the school secretary, parents' evenings, visits from the in-laws and an unforgettable visit to a public lavatory.



The bane of Ruth's life is her 34DD cupped friend, Timmy's Mum. ("Oh hi Ruthie, look I've got a hu-uge favour to ask.") Ruth's role in the relationship is to make Timmy's Mum feel better about herself. Timmy's Mum's is to make Ruth feel worse. Things look up when Ruth prangs the car into dangerously good-looking Millie's Dad's BMW. They meet again at the PTA event..... Will her honour/marriage survive?

Entertainment Cont'd overleaf

ENTERTAINMENT CONT'D

HEART OF ENGLAND JAZZ BAND

Saturday 16th April 2011

Experienced musicians playing traditional & Dixieland jazz, most of whom are vocalists as well as instrumentalists. All have played for many years in the Midlands' foremost bands. The Band had played of most of the major jazz clubs in the UK and at numerous jazz festivals, both at home and abroad, where its entertaining and accomplished repertoire brings pleasure to varied audiences everywhere. The Band play every year at the Centre and continue to be a sell-out, offering a highly entertaining evening....



"I've retained my independence and gained a better quality of life"

Come and discover how Assisted Living at Richmond Coventry can provide complete peace of mind for you and your loved ones.

We provide support and assistance for people who are finding it difficult to live independently, but do not need the 24-hour care provided by a nursing home. Assisted Living with Richmond Coventry means buying your very own apartment in our stunning village community. We take care of the daily chores meaning you can enjoy prolonged independence in a safe, caring, socially active and supportive environment. Plus there's always the reassurance that care is on hand 24 hours a day.

To find out how we can help, please call 02476 645544 or visit www.richmond-villages.com

Hospital Lane, Coedryers End, Bedworth, Warwickshire CV12 0FB



Part of the Bechtelar Healthcare Group

SIL LUM KUNE 少林拳 **Kung Fu** **少林拳**

Learn self-defence, while achieving control, fitness and confidence

Low training fees with World Champion tuition

Bulkington Boys Club, Barnacle Lane

Little Tigers (4-8 yrs old)
Wednesday & Friday 4.30-5.30pm

Kung Fu (8yrs to adults)
Wednesday & Friday 5.30-6.30pm

Classes taken by Paul Burkinshaw
World Champion & 6 times UK Champion
Combat Hall of Fame 2001 & 2005

1st Trial lesson free,
fees start at £26 per month for 2 lessons per week
*** Free suits for first 30 people to join ***

Local Classes also in
Bedworth, Nuneaton, Hinckley & Coventry

New members always welcome
Contact Paul on 07973 421860

Martial Arts Academy & office
2 George Street Ringway, Bedworth.
www.sil-lum-kune.com

B.D.T.S

Bedworth Dog Training School

Pet Dog Training, coming to
Bulkington Village Centre..

From puppy classes to Grade 3 Gold
Canine Psychologist

Training at Bulkington Village Centre
from Sun 10th October



For bookings contact Diane
on 024 7631 6478

Bedworth.ansleydogtraining@gmail.com

www.bedworthdogtrainingschoolBDS.co.uk



Beadelicious Bead & Jewellery Making Soiree

Learn how to make your own beaded jewellery at our fun Bead Soirees where we sell everything you need to get started making your own fab jewellery. We have a huge selection of beads & findings for sale & have tools available for people to sue on the day. All levels / ages are welcome from total beginners to project ideas sheets on hand to

help you get started. Check out our website at www.beadelicious-beads.co.uk for more info. We are open from 10.00-14.00.

No cost to pop in and browse, £2.00 to sit down and have a go & £4.00 to take part in this months project idea.

Generally held on 3rd Sat of each month at the Centre. Contact Louisa on 02476 490033 for more info.



Recent participants in this years prestigious BBC Radio 3's Choir of the Year and now LIVE on stage at BULKINGTON VILLAGE CENTRE is Stratford's own **SHOUT Gospel Choir** playing with its own **groovalicious** rocking band **"The Soul Machine."**

SHOUT Gospel Choir



Sat 27th November 2010

Doors open at 6.30pm,
Show starts 7.30pm

Bulkington Village Centre, School Road, Bulkington, CV12 9JB

Tel : 02476 494094

Tickets £6.00 per person

(includes 1st drink on arrival*)

Family Tickets £20.00 (2 adults, 2 U16's)

The Choir sings and plays gospel music in its broadest sense, from artists such as Bob Marley, U2, Ray Charles, The Temptations, The Rolling Stones – anything that touches the soul and is packed with feeling! The feel good factor is guaranteed!!!

*Choice of either glass of wine, beer, tea, coffee or squash as first complimentary drink

OPERATION CHRISTMAS CHILD



We will once again be a registered drop off point for the Operation Christmas Shoebox Appeal at the Centre. If you would like to prepare a shoebox, please call into the Village Centre to collect a form which tells you the sort of things to include in your box.

It is important that the contents comply with the guidelines detailed on the form.

CLOSING DATE — 12th NOVEMBER



PILATES

At Weston in Arden First School

PILATES POWER BAND CLASS
6.30pm - 45 Mins
£4.50

PILATES MATWORK CLASS
7.15pm - 1 Hour
£6.00

NEW TERM STARTS
THURSDAY 9th SEPTEMBER



PLEASE CALL JILL ON 07768 464164 TO BOOK OR FOR MORE DETAILS

Bulkington community & farmers' market

fresh local farm produce & seasonal provisions
 quality homemade produce, honey, pickles, preserves
 locally produced arts & crafts
 and original gifts for all the family.

Bulkington Community & Farmers' Market will be held on:
 Saturday 12th June 2010
 Saturday 10th July 2010
 Saturday 14th August 2010
 Saturday 11th September 2010
 Saturday 9th October 2010
 Saturday 13th November 2010
 Saturday 11th December 2010

Second Saturday of each month from 9.30am - 2.00pm
 at Bulkington Club for Young People
 Barnacle Lane, Bulkington, CV12 9RJ



BEC Bulkington Eye Clinic
 64 Leicester Street, Bulkington CV12 9NG

Sale

Up to 50% off to frames

*Huge range of Designer & Budget Frames available.
 Free lenses with all frames (standard single vision lenses)*

FREE MOT FOR YOUR GLASSES
Bring in your old glasses for screw tightening, re-shaping and cleaning.

CONTACT LENS CONSULTATIONS

FREE EYE TESTS AND FREE GLASSES FOR KIDS
Hannah Montana, Superman, Spiderman and many more.

FREE FRAMES FOR NHS VOUCHER HOLDERS
From a selected range

SUNGLASSES STARTING FROM ONLY £79.90
Including prescription lenses, UV protection & tint.

GREAT RANGE OF ACCESSORIES
From contact lens solutions to magnifiers

FREE HEARING CHECK
With a qualified audiologist.

Optometrists K.S. Balins BSc MCOptom, B.S. Jhalal BSc MCOptom

FREE PARKING WHEELCHAIR ACCESS Tel. 02476 312 000

GUCCI PRADA
 BOSS ARMANI
 Emporio Armani
 Dior
 Versace
 Givenchy

WHY DON'T YOU ADVERTISE HERE!?

Contact BVC on 02476 494094 or email bulkingtonvillagecentre@btconnect.com

nb leisure trust

Walking for Health in Nuneaton and Bedworth

Nuneaton and Bedworth's walking for health scheme has been going for nine years, with eight FREE walks held weekly across the borough.

The walks are open to anyone and are friendly, sociable and fun! Walking is one of the best ways of getting fitter and enjoying some fresh air.

If you are new to the walks please arrive 15 minutes early and introduce yourself to a walk leader.

If you would like more information or are interested in setting up a walk in your community contact the Community Walking Coordinator on 02476400585 or walking@nbleisuretrust.org

Mondays 10.30am: Weddington Walk, meeting at the church car park in Church Lane. There are two walks one lasting approximately 40 minutes suitable for all walkers and one lasting about an hour and suitable for more able walkers.

Tuesdays 10.30am: Nuneaton's Riversley Park, meeting at the front of the museum. Suitable for all walking abilities, the walk lasts 30 minutes to an hour.

Wednesdays 10.30am: Bedworth Miners' Welfare Park, meeting at Bedworth Leisure Centre. The walk will last between 30 minutes and an hour and is suitable for all.

Wednesdays 12.30pm: Camp Hill Walk, meeting at Ramsden Avenue NHS drop-in centre. The walk includes the local park and lake and lasts for 30 minutes to an hour. Uses flat and paved paths.

Thursdays 1pm: Town Hall walk, meeting in front of the town hall. Suitable for all and ideal for people to enjoy some fresh air in Riversley Park on their lunch break. The walk lasts for 30 minutes.

Sundays 10.30am: Stockingford (Whittleford Woods), meeting in the car park of the Cherry Tree pub on Haunchwood Road. The walk includes many gates and uneven paths and lasts for an hour.

Bulkington War Memorial Club

Monday Club



**EVERYONE IS WELCOME
COME ALONG & ENJOY**

Raffles Blackout
 Tea, Coffee & Biscuits
 Bingo

* PLEASE BRING YOUR OWN MUG *

BEDWORTH & DISTRICT CRAFT CLUB

– This friendly Club was formed in 2005 to bring together local craft workers for mutual support and to explore outlets for their work. Meetings, held at the Centre on the 4th Tuesday of every month (except Aug & Dec), usually include either a workshop, demonstration or talk, and refreshments are available. Visitors are always very welcome. If you are interested in becoming a member please contact the membership secretary, Lynne McFarlane on 024 7637 1153 or email lynne@cannycrafts.freesevice.co.uk



MERCIA BOTANICAL ARTISTS SOCIETY

2nd Saturday Monthly

Come along & see what we do or contact:

Marj Hall - 01827 282814 or
 Derek Nelson - 01926 640045

BVC NEWS

Our **OPEN DAY** was a huge success & I know that the various groups we had on display were very pleased with the feedback & interest in joining their activities. A **BIG thank you** to everyone who helped make the day a success!

We now have the main hall equipped with **integral multi media equipment** as well as the Arden Room, so we will be taking full advantage of this & as advertised we will hold our first **FILM NIGHT** at the centre in November. Anyone can use this equipment to **show presentations, play music, DVDs** at no extra cost, enquire for details.

BVC needs you! We believe Bulkington is very lucky to have such a great facility within the village & needs your support to maintain this fantastic facility & service that we offer. For just a £1.00 one off payment you could **become a member of BVC & have a say in the future of your local community centre.** You just need to be a resident of Bulkington & you can vote at the AGM! Alternatively you may even be interested in taking this a step further & becoming a volunteer on the Board of Trustees of BVC. If you are community minded & think you may have something to offer please get in touch now...

COMMUNITY ACTIVITES

DAY	TIME	ACTIVITY	GROUP CONTACT	NUMBER
MONDAY	10-11.30AM	YOGA	BOB JOHNSON	024 7634 9853
	10-1PM	U3A ART	IRENE O'NEIL	024 7673 7363
	10-3PM	PHOENIX LACE	JEAN WESTERMAN	024 7673 0236
	11.30-12.30PM	KEEPFIT	DARREN CHECKLEY	07966 467706
	1-2PM	DANCE TUITION	JENNY SMITH	024 7637 5699
	2-6PM	DANCE EXPRESS	KELLY ABRAHAM	07989 994884
	2-4PM	TEA DANCE	JENNY SMITH	024 7637 5699
	7-8PM	WEIGHT WATCHERS	DAWN HELSBY	07846 641066
	7.30-8.30PM	LINE DANCING	CLAIRE WILKINS	024 7636 4808
2nd Mon of month	7.30-9PM	DOLLS HOUSE & MINATURES	JOYCE CHANDLEY	024 7631 2600
TUESDAY 3rd Tues	10.30-12.30PM	OLDER PERSONS FORUM	DARRELL BUCKLEY	024 7673 2491
3rd Tues	2-4PM	U3A MEETING	IRENE O'NEIL	024 7673 7363
	6.45-7.30PM	BEGINNERS SEQUENCE DANCE TUITION	JENNY SMITH	024 7637 5699
	7.45-10PM	MODERN SEQUENCE DANCE	JENNY SMITH	024 7637 5699
	7-9PM	LACE MAKING	MRS MASSON	024 7631 4237
	6.30-7.30PM	ZUMBA	AMANDA LEWIS	07854 729030
2nd Tues	7.30-10.00PM	MERCIAN ACCORDIANS	ERICA CLARKE	01788 567169
	7.30-8.30PM	ZUMBA TONING	AMANDA LEWIS	07854 729030
4th Tues	7.30-9.30PM	BEDWORTH & DISTRICT CRAFT CLUB	CAROL CAMPTON	024 7664 4101
Fortnightly	7.30-10PM	CAMERA CLUB	LEN WARD	024 7631 4947
WEDNESDAY	9.30-12.30PM	REBEL ART	GAY BOLTON	024 7635 2263
	6.30-8.30PM	GERMAN	GORDON MERCER	07887 846783
	6-9.30PM	CREATIVE WRITING	DIANE LINDSAY	01788 832210
	6.30-7.00PM	CORE BALL WORKOUT	AMANDA LEWIS	07854 729030
	7.00-8.00PM	ZUMBA	AMANDA LEWIS	07854 729030
	8.00-9.30PM	POLE DANCE FITNESS	AMANDA LEWIS	07854 729030
2nd Weds	7-9PM	HARPISTS	BERNICE ROBINSON	07792171872
	7-9PM	FLOWER ARRANGING	JOAN UREN	024 7673 1836
	7.30-10PM	NUNEATON ARTS SOCIETY	JIM KIRKWOOD	024 7638 7209
3rd Weds	7.30-9.30PM	BULKINGTON GARDENING CLUB	PAUL NASH	024 7649 1820
THURSDAY 1st Thu	2-4PM	U3A CAMERA	IRENE O'NEIL	024 7673 7363
	5-7.15	DANCE EXPRESS	KELLY ABRAHAM	07989 994884
	6.30-8.30PM	FRENCH	GORDON MERCER	07887 846783
	7.30-9PM	YOGA	BOB JOHNSON	024 7634 9853
	7-9.30PM	TAP DANCING	AVIS STREET	024 7634 6624
Occasional	6.30-9PM	SILVERSTAR STUDIO ART	MICHELLE STAMPER	024 7668 9309
FRIDAY	9.30-11AM	SNAPPERS PARENT & TODDLER	CHILDREN'SCENTRE	024 7631 8786
(Occasional)	6.00-10.00PM	WOODTURNERS	ERIC TAYLOR	024 7632 8831
	5.45-6.30PM	BOXERCISE	DARREN CHECKLEY	07966 467706
(Fortnightly)	7.30-10PM	BEDWORTH ARTS SOCIETY	JOAN LESLIE	024 7631 6516
SATURDAY	9-4PM	DANCE EXPRESS	KELLY ABRAHAM	07989 994884
NEW	10.00-2.00PM	BEADELICIOUS JEWELLERY MAKING (Various, generally 3rd wk of the month)	LOUISA MOSS	02476 490033
	9-3PM	SMART TUTORING	SUE SALE	02476 398793
SUNDAY	OCCASIONAL	ADAN ART	ANNETTE COOKE	01476 530304
	10-12	TAI CHI	GEE HIGHAM	07973 394011
	OCCASSIONAL	PAPER DOLLS	NAOMI/JEANETTE	024 7635 0355